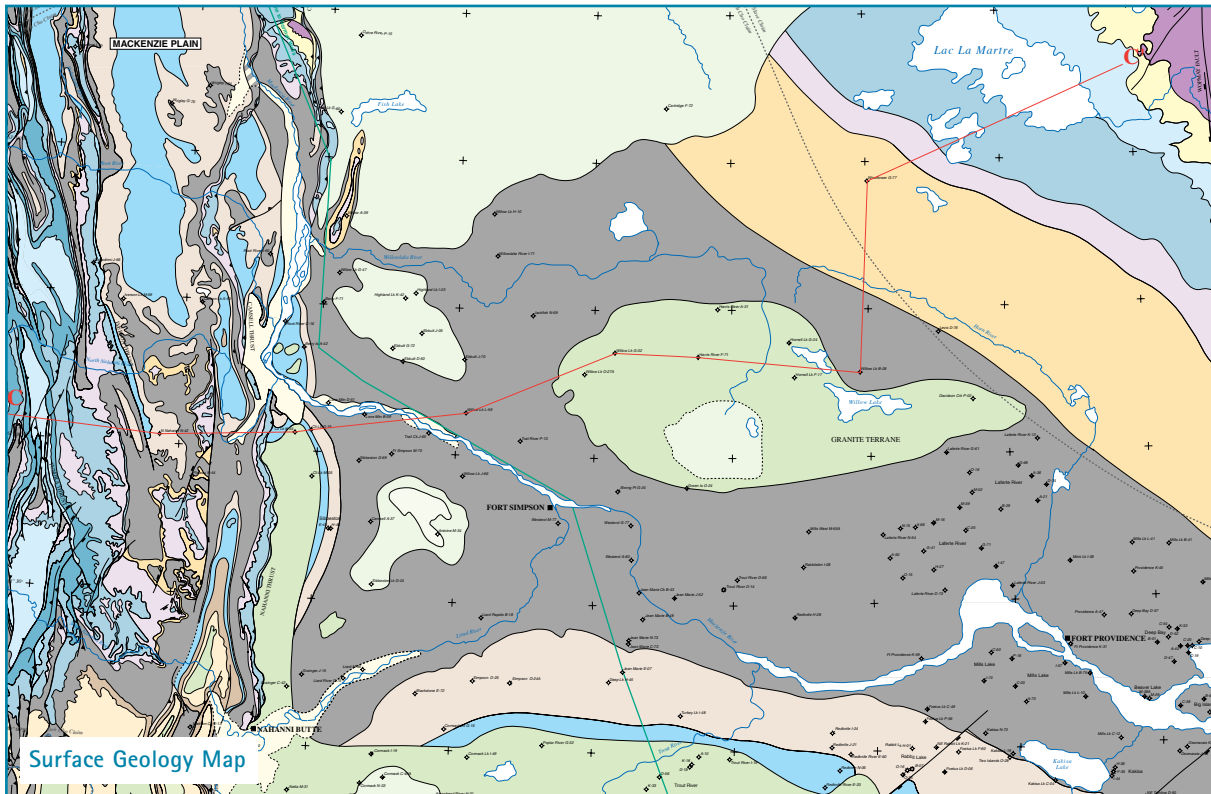


# HYDROCARBON POTENTIAL of Southern Northwest Territories



## INTRODUCTION

The study area encompasses the territory north of 60° between Alberta and the Norman Wells oilfield including eastern British Columbia and the Mackenzie Valley. Together with the Mackenzie Delta and Valley Report (1993), which overlaps at the Norman Wells area, the report provides a consistent review of the whole of the Northwest Territories.

The region is considered highly prospective, with deposits of oil and natural gas discovered in the Pointed Mountain, Cameron Hills, Norman Wells and Central Mackenzie Valley areas.

Over 6,000km of released and proprietary seismic from AmocoCanada has been used, and is supported by, reprocessed gravity and magnetic data and stratigraphic correlations using over 450 wells. The interpretation of the petroleum geology includes a full reworking of

a comprehensive geochemical database and this has been used to provide an understanding of the hydrocarbon potential of the region.

### The Report:

- Provides an integrated geological and geophysical framework for the exploration of the Southern Territories.
- Establishes the regional structural setting and tectonic history and determines basin configuration, detailed structural elements and prospective trends, using available magnetic, gravity, seismic and well data.
- Determines a regional stratigraphic correlation from lithological, biostratigraphical, paleo-environmental and wireline log data, to establish the distribution of source, reservoir and seal.

- Identifies the principal reservoir, seal and source rock associations and the tectono-sedimentary controls on their distribution.

- Integrates geochemical data with the re-evaluated structural framework using basin modelling techniques, to establish timing of hydrocarbon generation and likely migration pathways.

- Identifies play concepts and where hydrocarbon discoveries may be expected to be made in the future.

- Examines the relevant petroleum legislation, environmental considerations, fiscal terms and the economics of operation in the Southern Territories.

- Presents companies with a geological database, maps, well information and field statistics.

## CONTENTS

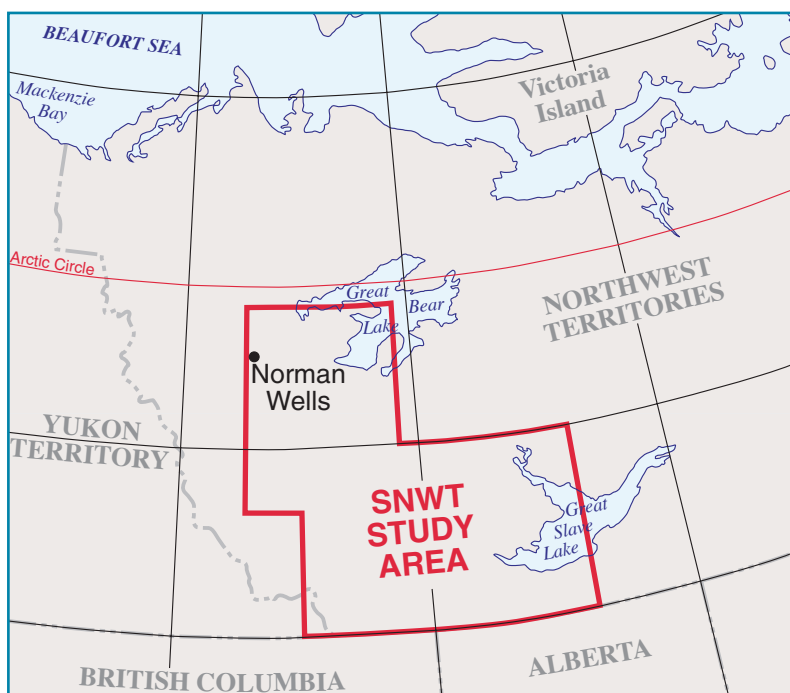
The report includes 320 pages of text and 234 figures in the following chapters:

- General Introduction, Regulatory, Fiscal and Environmental Framework
- Exploration History
- Database
- Interpretation Methodology
- Structural Framework
- Stratigraphy
- Petroleum Geology
- Hydrocarbon Potential
- Field Development and Cost Database
- Economic Modelling and Analysis

A set of 40 enclosures illustrate structure, stratigraphy, petroleum geology, reservoir potential, prospective trends and structural leads and include:

- Well and Concession Base Maps
- Stratigraphic Columns
- Regional Structure Elements
- Depth Maps on Key Horizons
- Isopach and Facies Maps
- Structural Cross-Sections
- Seismic Composites
- Gravity and Magnetic Data
- Source Rock Distribution Maps
- Hydrocarbon Play Concepts

DATE: 1995



## COST

Report, exclusive of any tax, delivery or customs' duties:

US \$ 50,000

Digital format (PDF), an additional:

US \$ 10,000

## Contacts:



**Yvonne Drummond**

Tel: +44 (0) 1580 212080

Fax: +44 (0) 1580 212205

Email: [info@expgeo.co.uk](mailto:info@expgeo.co.uk)

Website: [www.expgeo.co.uk](http://www.expgeo.co.uk)



**Peter Elliott**

Tel: +44 (0) 7971 073198

Email: [peter.elliott@epsweb.com](mailto:peter.elliott@epsweb.com)

**Joel Harding**

Email: [joelharding@shaw.ca](mailto:joelharding@shaw.ca)