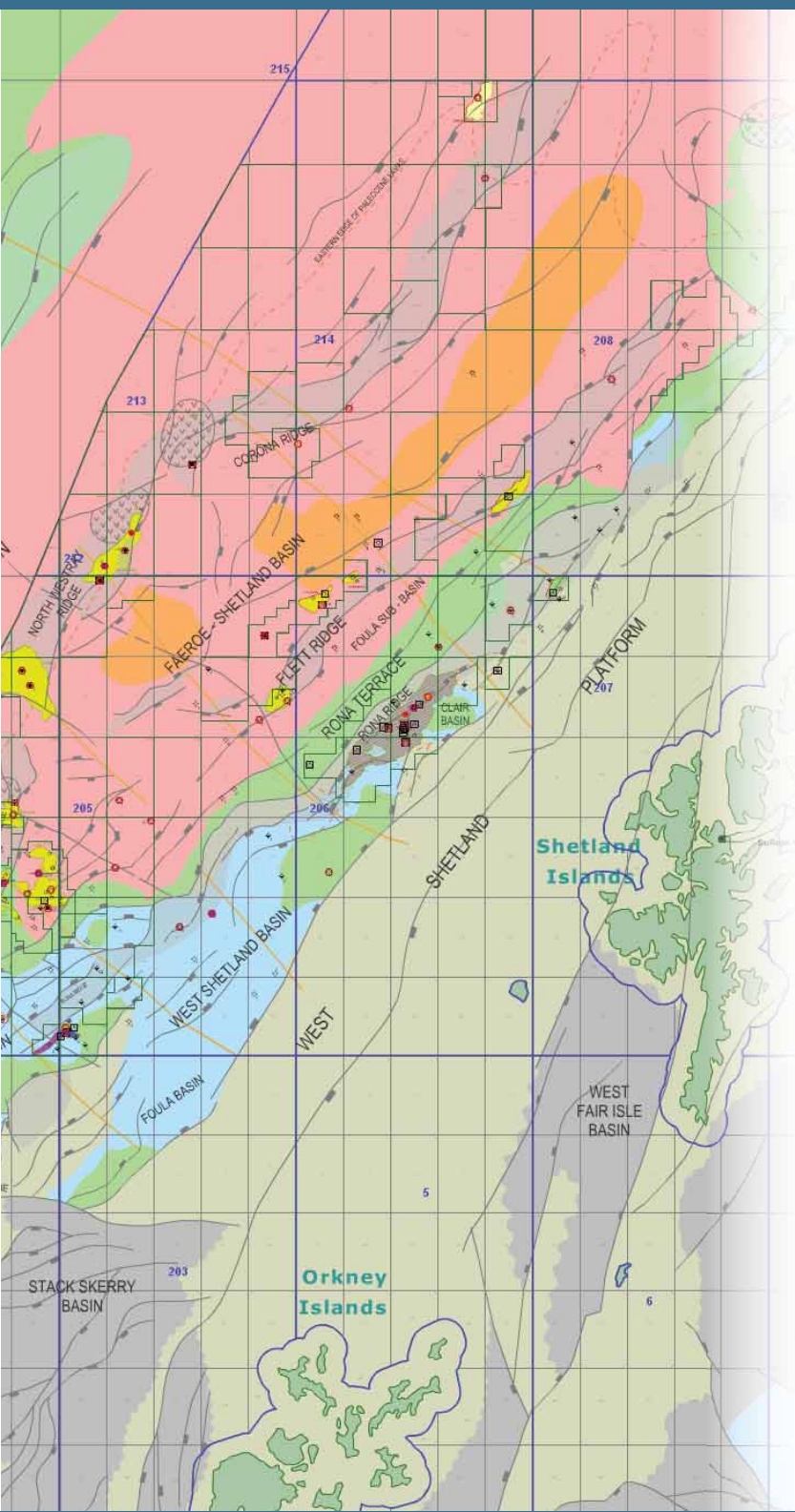


WHAT Map

Well Information, Hydrocarbon Shows And Test Data

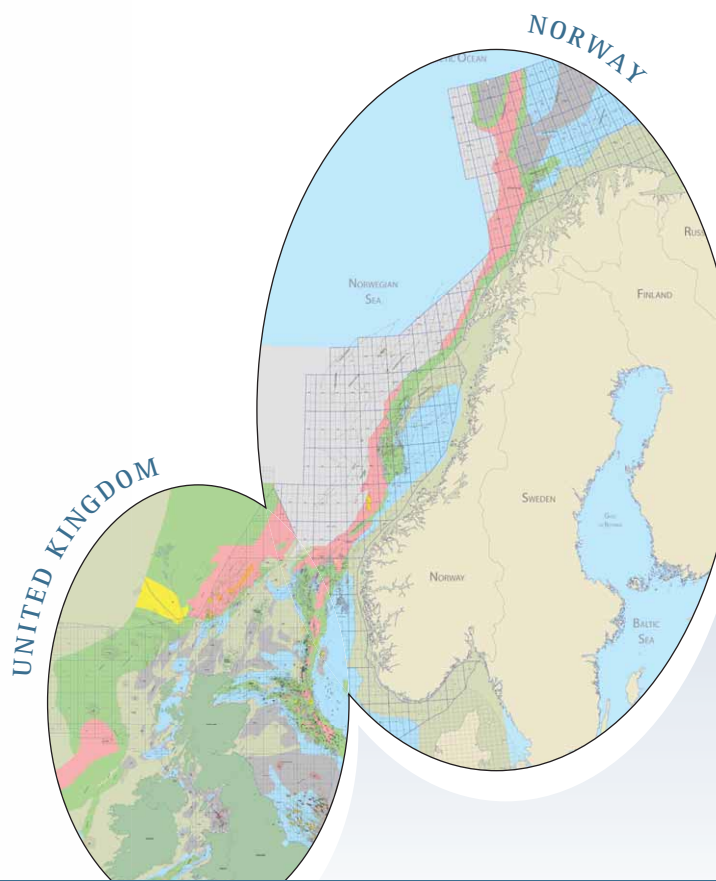


An interactive, data-rich activity and exploration map for the North Sea!

The WHAT Map interface includes:

- Detailed geology and seamless coverage for the UK and Norway Continental Shelves - layers toggle on and off.
- "Clickable" wells with accompanying details, results, tests, commentary and shows - subject to release status.
- Links to UK and Norway Discovery Digest reviews.

www.whatmap.co.uk

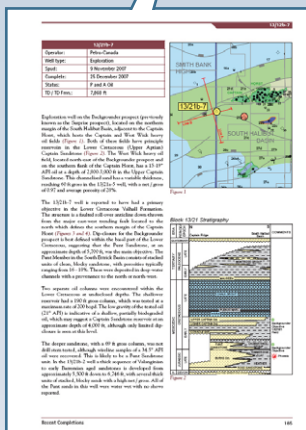
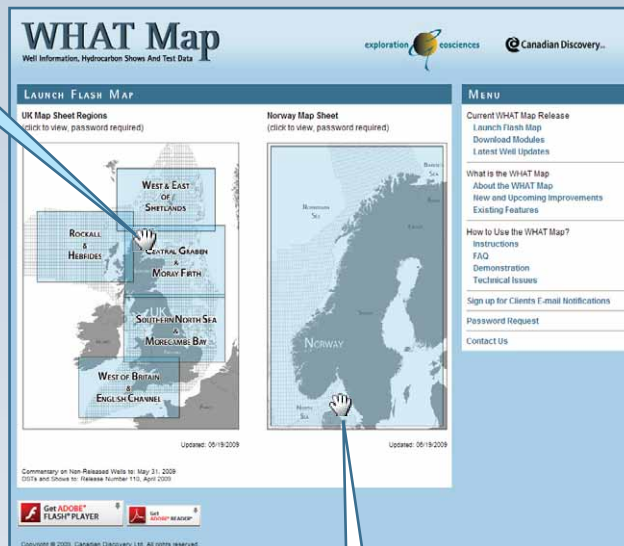


The United Kingdom Map Sheets (5 in total) include:

- Detailed geology of the UK Continental Shelf (hydrocarbon maturity, reservoir distribution and subcrops)
- Cultural base map incorporating detailed structural framework
- Detailed, geologically focused commentary for unreleased wells
- Complete DST information - including shows by age - for all exploration and appraisal wells
- Updated review of well results, by examination of all composite logs, as wells are released
- Links to >500 UK Discovery Digest articles

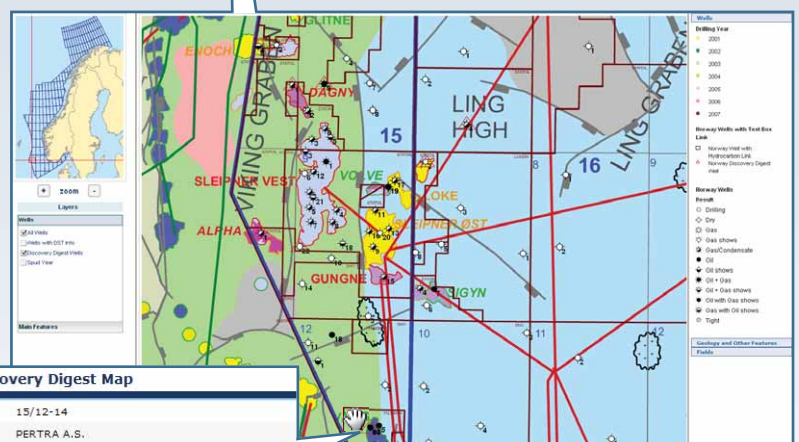


Well: 13/21b-7
Operator: PETRO-CANADA
Spud date: 09.11.2007
Completion date: 25.12.2007
WHAT status: Oil
Oil shows:
Gas shows:
DSTs: 200 bopd 21 deg API
UK Digest: [VAT_RC13_21b-7.pdf](#)
Comment: Exploration well of the Surprise prospect with a primary objective on the Lower Cretaceous Valhall sandstone Member) at an



The Norway Map Sheet includes:

- Geology of the Norway Continental Shelf
- Recently released and completed wells, including DSTs
- Links to >180 Norway Discovery Digest articles

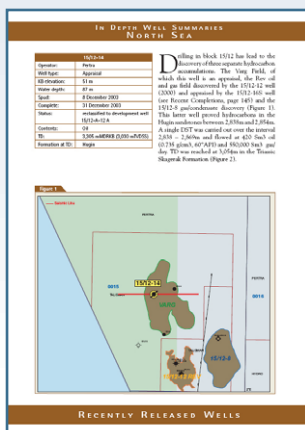


Norway Discovery Digest Map

Well: 15/12-14
Operator: PERTRA A.S.
Spud Date: 2003.12.08
Completion Date: 2003.12.31
Status: OIL

Norway Discovery Digest Article

[V01_036.pdf](#)



EXAMPLE OF UNRELEASED WELL REVIEW

Click on any well with a coloured circle to go to relevant textbox

 13/29b-9

Operator: Talisman Oil Shows:
Spud: 25.05.2004 Gas Shows:
Complete: 04.07.2004 DSTs:
WHAT Status: Tight

UK Discovery Digest Article, Vol. 10-141.pdf

Comments:

Exploration well on the Skate prospect. Skate is located between the Ross and Blake fields and within the WNW-ESE Captain Sandstone channel trend. This reservoir fairway runs along the depositional axis of the West Buchan Graben and includes the main channel system developed within the Blake Field and the Cromarty and Atlantic gas condensate fields, both of which are dip-closed mounds developed over the channel axis. The 13/29b-9 well is thought to have drilled a similar prospect. Cromarty discovery well 13/30-3 proved high quality sandstones with an average porosity of 26% and permeabilities of up to 2,600 mD. Well 13/30a-4 was water wet, but encountered 390 ft of massive stacked turbidite sands. Atlantic has a 100 ft gas column in the Apto-Albian Captain Sandstone (GWC -6,449 ft TVDSS). The Cromarty and Atlantic fields will be jointly developed, with subsea production exported via the Goldeneye platform from late 2005. Initial reserves are 167 bcf gas and 2 mmbbl condensate.

EXAMPLE OF HYDROCARBON TEST DETAILS

Click on any well symbol with a square around it to go to relevant detail on test data. For example:

 14/26a-6

DST 1 Kopervik (Britannia sandstone) Formation,
Lower Cretaceous
Horizon, Test Interval 6,458-6,508 ft.
946 bcpld 67.8° API, 1" choke.

EXAMPLE OF HYDROCARBON SHOWS

Click on any shows well symbol to go to relevant detail on shows.
For example:

 13/30a-4

Oil Shows
Lower Cretaceous/Upper Jurassic deepwater.

A 2009 basic WHAT Map subscription includes:

Flash Online (www.whatmap.co.uk)

- UKCS Map Sheets (5) updated monthly
- NCS Map Sheet updated twice per year

Flash Stand-Alone

- UKCS and NCS Map Sheets provided separately
- Downloadable from www.whatmap.co.uk
- Updated quarterly

Cost **£6,100** - annual subscription

Add-on modules are also available:



PetroView® Module

- Incorporates both the UKCS and NCS
- Includes easy-to-use search and query tool
- Developed for MapInfo and ArcGIS
- Downloadable from www.whatmap.co.uk
- Updated quarterly

Additional **£2,300** (total cost = **£8,400**)*



ArcView™ Module

- Combined shapefiles for the UKCS and NCS
- Downloadable from www.whatmap.co.uk
- Updated quarterly

Additional **£2,300** (total cost = **£8,400**)*

*Both add-on modules **£3,900** (total cost = **£10,000**)

WHAT Map

Well Information, Hydrocarbon Shows And Test Data

Sales:

Peter Elliott

Tel +44 (0) 7971 073198

peter.elliott@epsweb.com



Canadian Discovery Ltd.

300, 706 - 7 Avenue SW

Calgary AB Canada T2P 0Z1

Tel 001-403-269-3644

Fax 001-403-265-1273

ideas@canadiandiscovery.com

www.canadiandiscovery.co.uk



Exploration Geosciences Limited

Shear Farm Barn

North Road, Goudhurst, Kent TN17 1JR

Tel +44 (0) 1580 212080

Fax +44 (0) 1580 212205

info@expgeo.co.uk

www.expgeo.co.uk

